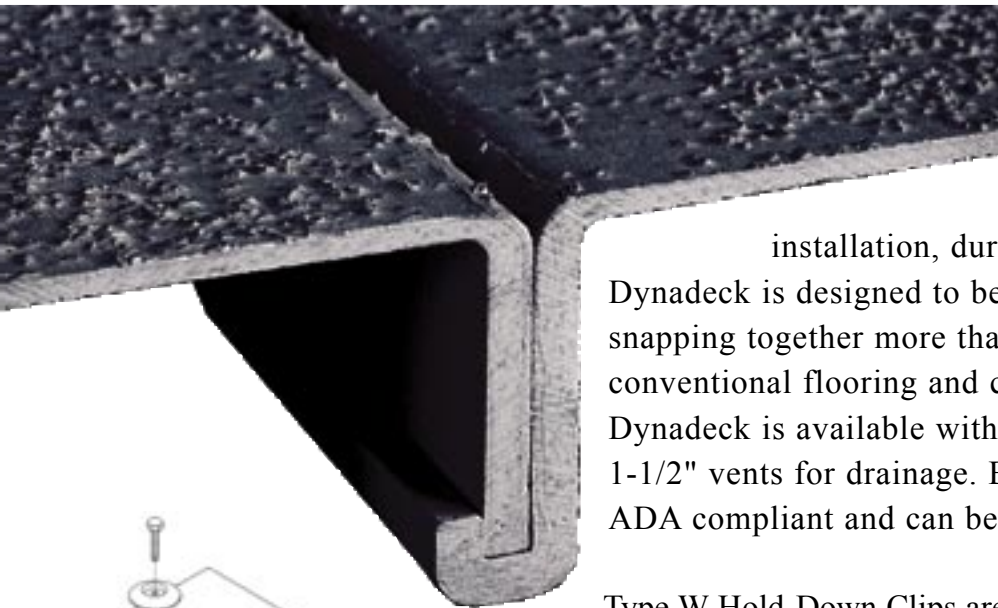


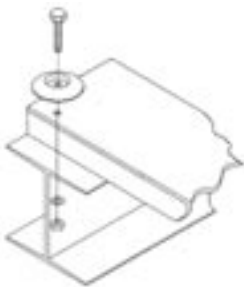
Dynadeck® Interlocking Flooring



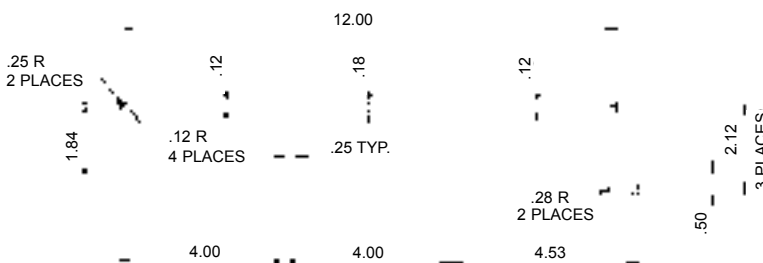
Used in a wide range of industrial and commercial applications, Dynadeck® Interlocking Pultruded Flooring panels provide a unique combination of easy installation, durability and low-maintenance.

Dynadeck is designed to be easily installed with sections snapping together more than three times faster than conventional flooring and can be disassembled for transporting. Dynadeck is available with a smooth top or with 1/2" wide x 1-1/2" vents for drainage. Both the smooth and vented tops are ADA compliant and can be gritted for slip-resistant surfaces.

Type W Hold-Down Clips are recommended to secure Dynadeck panels to structural supports in order to eliminate potential damage to the panel.



Standard Smooth Solid Details



Load & Deflection Information

Span	U/C	100 lb	200 lb	300 lb	500 lb	1000 lb	2000 lb
2 ft	□U	.010	.018	.029	.049	.097	.194
	□C	.008	.015	.024	.039	.079	.158
3 ft	□U	.035	.070	.105	.175	.350	—
	□C	.019	.038	.057	.095	.190	.380
4 ft	□U	.111	.222	.333	.555	1.110	—
	□C	.045	.090	.135	.225	.450	.900
5 ft	□U	.270	.540	.810	1.350	—	—
	□C	.068	.175	.263	.438	.876	—
6 ft	□U	.562	1.124	1.686	—	—	—
	□C	.151	.302	.453	.755	1.510	—

Dynadeck® Surfaces



- Smooth Solid
- Optional Gritted Solid
- Smooth Vented
- Optional Gritted Vented

Dynadeck® Resins

- ISO - Olive Green, Non-fire Retardant
- ISOFR - Dark Gray (Standard), Flame Spread of 25 or Less
- VEFR - Beige, Flame Spread of 25 or Less

Applications

- Cooling Tower Fan Decks
- Cooling Tower Access Walkways
- Roofing Walkways
- Odor Containment Trench Covers
- Offshore Platform Protective Walls